



Welcome to Session 3: Action

The Prisons Awareness Course

23rd June 7:30pm

Welcome back, we'll begin this session shortly...



Aims & Objectives

For faith communities to explore the connections between who faith communities are at their best and some of the themes that recent research has shown to help someone leaving prison make a new life that is free from crime.

The aims of this session are to:

- Understand the importance of creating safe communities and a safeguarding culture
- Explore who we are as a faith community
- Consider how 'who we are' might help a prison leaver with faith thrive as they work to re-establish their lives in the community
- Understand the powerful role that faith communities can play in resettlement and transformation
- Consider how faith communities can also be changed by accepting people who have left prison into their community
- Reflect on attitudes towards prison and prisoners
- Consider options for action and how we might be able to strengthen links with the prison





Overview

- Welcome & Introductions
- Who We Are
- Reflections & Activities
 - Trusting the 'Untrustworthy'
 - Unlocking the Second Prison
 - The Keys- People, Faith & Action
 - Ending Place Survey
- Next Steps & Questions





Who We Are

Faith communities can offer a spiritual home, a friendly community of steady and supportive relationships as well as appropriate practical assistance to people leaving prison.

Research has shown that aspects that faith communities have to offer are important to help people leaving prison to build towards a new life that is free from crime.





Safeguarding

Creating Safe Communities

- What does safety for prison leavers with faith look like?
- What does safety for faith communities look like?

Is there a place for trust?

- Research shows that well placed trust is important in building healthy communities
- Diligent & informed trust not blind trust or mistrust
- Placing trust is a good bet





Safeguarding

Safeguarding Culture – Working With All Prison Leavers

- The Welcome Directory does not make referrals
- An opportunity to review existing procedures
- Resources at NSPCC Learning, Unlock, ThirtyOneEight & our website
- References and Feedback





Safeguarding

High Risk Offences

- Multi Agency Public Protection Arrangements (MAPPA)
- License conditions
- ViSOR database
- Engage with relevant statutory bodies
- Template paragraphs



Safeguarding



Conflict of interest

- Within the prison
- Within the faith community
- Specific to prison/probation service employees

Local Support & Advice

Safeguarding concerns should be reported to the appropriate statutory authority. Find out what your local links are for relevant support, e.g. mental health/ addiction. Transparent working with Probation Officers is always best as they will have information of good local resources.

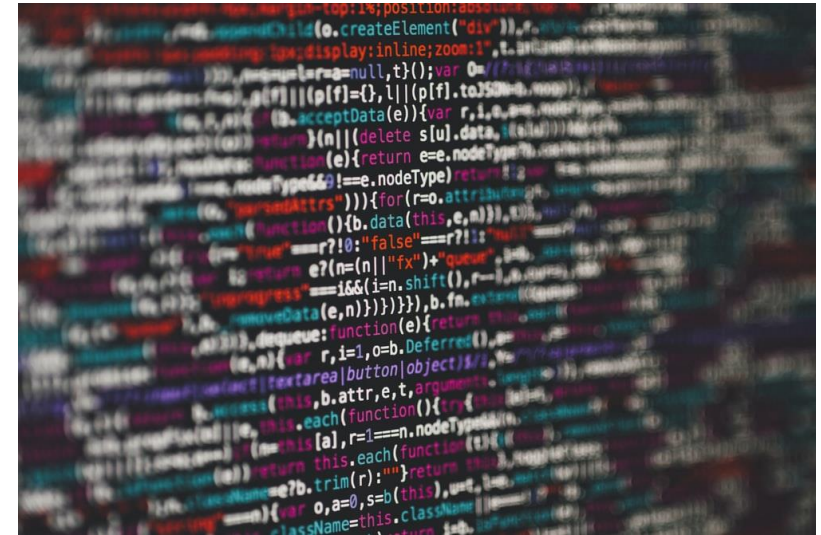




Safeguarding

Data

- The information in the directory is made available to:
 - Prison chaplains
 - Probation and resettlement teams
 - Prison leavers themselves
- What is publicly available on our directory
- Consider what data is included on your own websites



Trusting the 'Untrustworthy'



"It's hard to distinguish rumour from a report, fact from fiction, reliable source from dis-informant, truth teller, from deceiver. A crisis of trust can't be overcome by a blind rush to play small trust. Our ambition is not to place trust blindly as small children do, but with good judgement." Onora O'Neill, 2002



Talking points:

- Describe a time when you trusted someone and there was a positive outcome or when you trusted someone and there was a negative outcome.
- In what ways does your faith/ beliefs help you develop trust with people who have been untrustworthy?
- What ways can you practically and wisely build trusting relationships with people who have left prison?



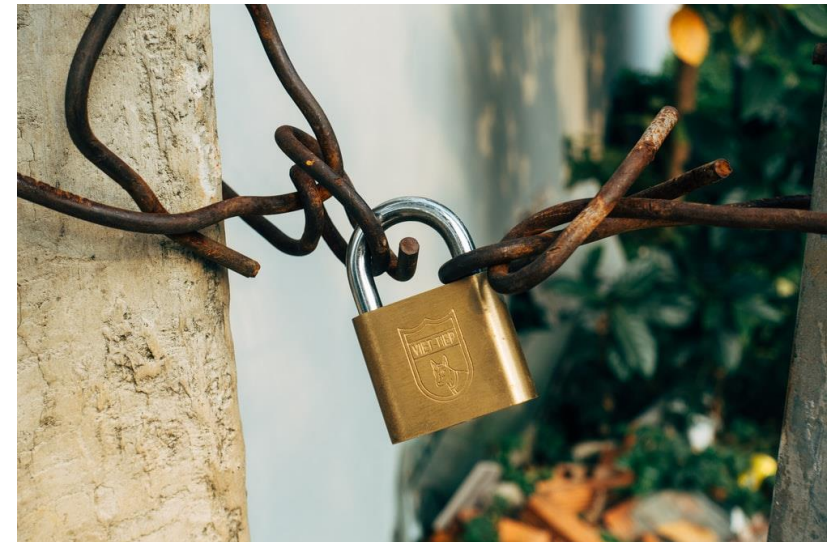
Unlocking the Second Prison

“As I walked out the door towards the gate that would lead to my freedom, I knew that if I didn’t leave my bitterness and hatred behind, I’d still be in prison.”

Nelson Mandela

“Change happens when we treat people as people with whom we build relationships. Investing time, energy and resources in the individual offender can lead to the kinds of transformation and reconciliation that other rehabilitation programmes could never achieve.”

The Archbishop of Canterbury



The Welcome Directory. Helping faith communities welcome and support people leaving prison

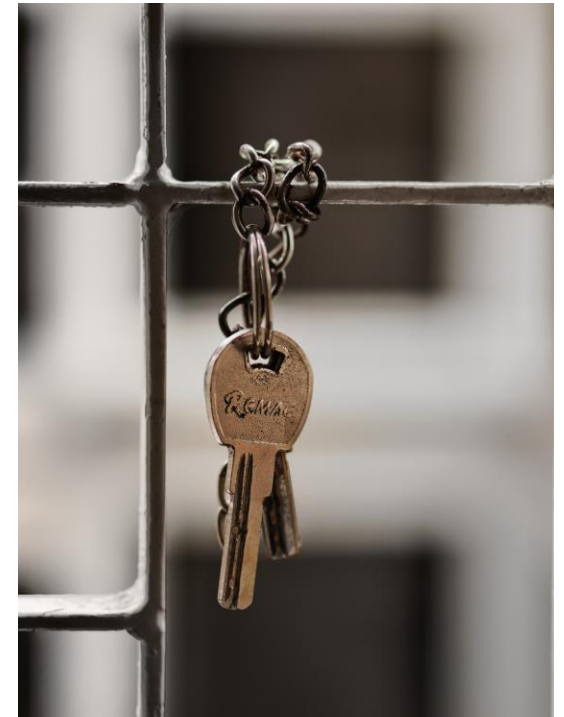
Unlocking the Second Prison



Consider this quote: “People transform themselves, we either facilitate it or hinder it.”

Talking points:

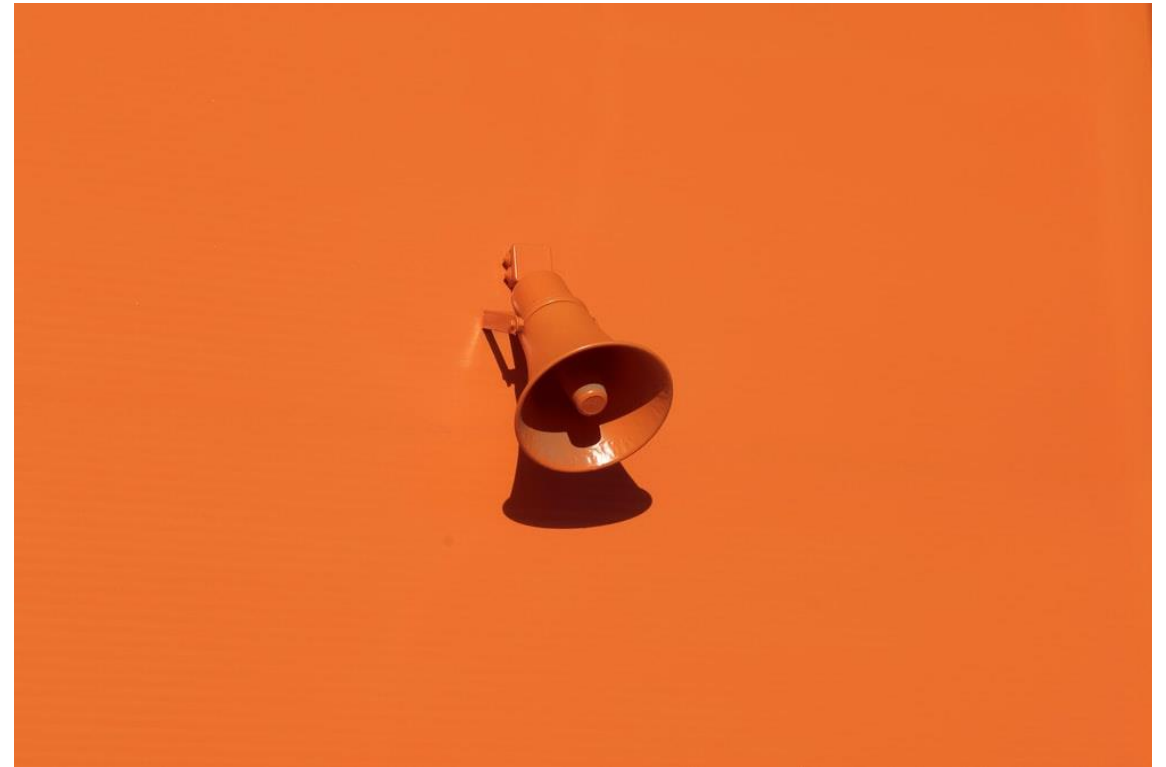
- Why do you think people who have left prison find it difficult to ‘turn their lives around’?
- What stories do you know of people whose lives have been transformed by their faith?
- How do you think faith has helped those people live better lives?
- What attitudes, in faith communities, can help people who have left prison embrace the transforming nature of faith or hinder their personal transformation?



Experience



From a registered faith community...



The Welcome Directory. Helping faith communities welcome and support people leaving prison



Our Communities have the Keys

People

- Positive steady relationships, parental figures, support structures
- Participating in community, sense of belonging
- People from all walks of life

Faith

- Promoting positive beliefs about love, compassion, peace and hope
- Positive self image that underlines worth and enhances self esteem
- Gives structure to our lives
- Practical application of learning to apply values and beliefs to everyday challenges e.g. money matters, disagreements

Action

- Find opportunities to make a difference in the wider community
- Sense of purpose beyond ourselves and motivation for change
- Using talents and strengths for good



Our Faith Community has the Keys

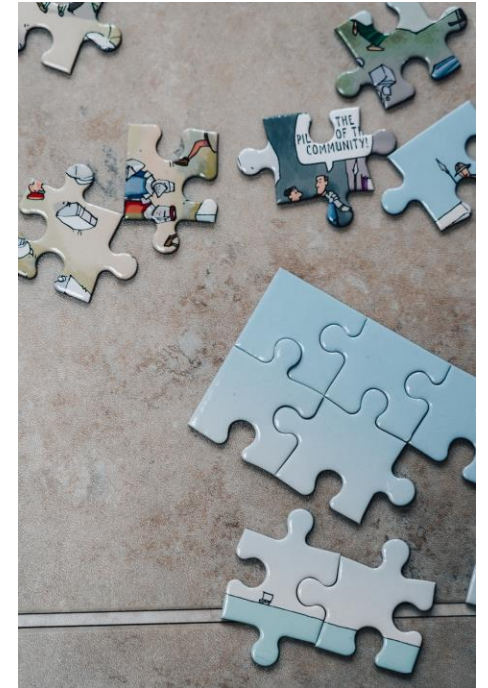
Significant qualities that faith communities possess can play a powerful part in resettlement

In your group, think about one of the following aspect of the life of your faith community to discuss: **People**- Build new friendships; **Faith**- develop their faith; **Action**- act on their faith

Talking points:

- How does your faith community help people engage with the area you are discussing [i.e. building friendships, growing in faith or acting out their faith in the community]?
- What issues can you foresee in helping people who have been in prison engaging in this area of your faith community's life?

Important question: What can you do to help your faith community develop a culture, where people who have left prison are completely included in the area you are discussing?



The Welcome Directory. Helping faith communities welcome and support people leaving prison

A Directory of Welcoming Communities



Searchable Online Map - Our website includes a searchable map, displaying all registered faith communities

Physical Directory - A physical copy of the registered faith communities

This enables individuals leaving prison, chaplaincy and resettlement teams to easily identify welcoming faith communities beyond the gates.



The Welcome Directory. Helping faith communities welcome and support people leaving prison

How Do I Register My Faith Community?



- **Permission** from Senior Faith Leader
- **Policy** for Safeguarding and named lead
- **Promoter** or 'Champion' who will advocate on issues relating to prisons within the faith community
- **Prison Link**, either through volunteering at a local prison, previous significant experience or completing the Prisons Awareness Course



Taking Things Further



Community Chaplaincy Association



Stay Informed

Attend 'Welcome Directory
Connections' Zooms

Pray Do

Registering

Tell others who may be interested

Becoming an Ambassador

Meeting prison leavers at the gate

Give

LANGLEY
HOUSE TRUST
HELPING PEOPLE TO
LIVE CRIME-FREE LIVES

CLINKS
Supporting the voluntary sector
working in the criminal justice system


Pact
120 years of serving
Prisoners • Families • Communities

The Welcome Directory. Helping faith communities welcome and support people leaving prison



Ending Place Survey

Note your position between 1 and 7

1. If someone who has left prison came to your faith community would you...
(1 keep your distance/ 7 accept them)
2. If someone who had left prison told you their story would you...
(1 be sceptical/ 7 seek to understand)
3. In your heart of hearts how do you feel towards people with a criminal past...
(1 judgemental/ 7 impartial)
4. If someone who had left prison and sought your help would you...
(1 point them in the direction of others/ 7 offer care and support)
5. If someone who had left prison sought your friendship would you...
(1 keep them at arms length/ 7 be open to being a friend)
6. If someone told you that they had been to prison would you allow that information...
(1 influence the present/ 7 be left in the past)



Ending Place Survey

Complete the sentence

7. Prison is
8. Someone who has left prison
9. If someone who has left prison wanted to become a member of your faith community they would

What do you intend to do differently having completed the three sessions?





Summary

- How to create safe communities as well as welcoming ones
- How faith communities support in personal transformation
- Understanding of the strengths of faith communities being made up of People of Faith who take Action
- How to be a part of a rehabilitation revolution!
- Where to go if you want more information
- Changes in perspective
- **THANK YOU!**



Questions

